

Access to iMember 2.0

https://member.freemason.org/membership_registration

https://member.freemason.org/users/sign_in

[Video instructions for New Registrant \(Hold “Ctrl” key and Click on Link\):](#)

[Chttps://youtu.be/Hx-WliihfcM](https://youtu.be/Hx-WliihfcM)

Click on Link: https://member.freemason.org/membership_registration

(Hold “Ctrl” key + Click on the Link)

**If you are a new registrant for iMember 2.0 Site.
Please click on “Member Registration.”**

Masons of California

Membership Registration

Lodge Number

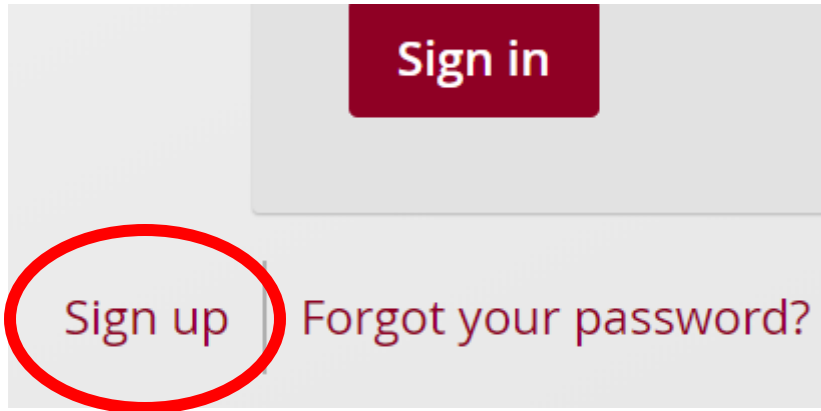
Member ID ~ Exclude Leading Zeroes ~

Last Name ~ Case Sensitive ~

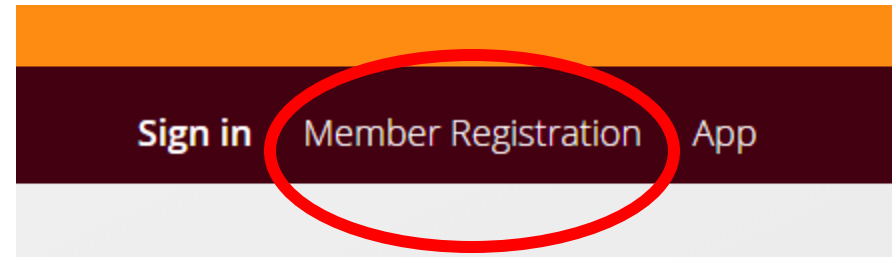
Check Membership Status

Type in your “Lodge Number”,
“Member Number” and your “Last
Name” in the boxes.

Then click “Check Membership
Status” box.



OR



Type in your “Lodge Number”,
“Member Number” and your “Last
Name” in the boxes. Then click
“Check Membership Status” box.

Masons of California

Membership Registration

Lodge Number

Member ID ~ Exclude Leading Zeroes ~

Last Name ~ Case Sensitive ~

Check Membership Status

Email

Password

Password confirmation

[Sign up](#)

Passwords must be at least eight characters

Type in your “Email Address”, create a “Password”, and retype you’re password again in the “Password Confirmation” box.

Then click “Sign Up”.

Sign in: https://member.freemason.org/users/sign_in

Masons of California Sign in Member Registration App

Sign In

Email
[Redacted]

Password
[Redacted]

Remember Me

Sign in

[Sign up](#) | [Forgot your password?](#) | [Didn't receive unlock instructions?](#)

©2020 Grand View Build: 20.4.22 Lodge Locator

If you are already registered or already created an account, type in your “Email” and “Password”.

Then click “Sign In”.

Reset Password Instructions

To reset your password, click on “Forgot Your Password” below the “Sign In” button.

Sign In

Email

Password

Remember Me

Sign in

[Sign up](#)

[Forgot your password?](#)

[Didn't receive unlock instructions?](#)

Forgot Your Password?

Email

[Send me reset password instructions](#)

[Sign in](#)

[Sign up](#)

[Didn't receive unlock instructions?](#)

Type in your “Email” address and the reset password instructions will be emailed to the address entered.

Unlock “Sign In” Instructions

Sign In

Email

Password

Remember Me

Sign in

[Sign up](#)

[Forgot your password?](#)

[Didn't receive unlock instructions?](#)


If you didn't receive your unlock instructions in the email, click on “Didn't Receive Unlock Instructions”.

Resend unlock instructions

Email

Resend unlock instructions

[Sign in](#) | [Sign up](#) | [Forgot your password?](#)



Type in your “Email” address on the highlighted area, then click “Resend unlock instructions”. The instructions will be emailed to the address entered.

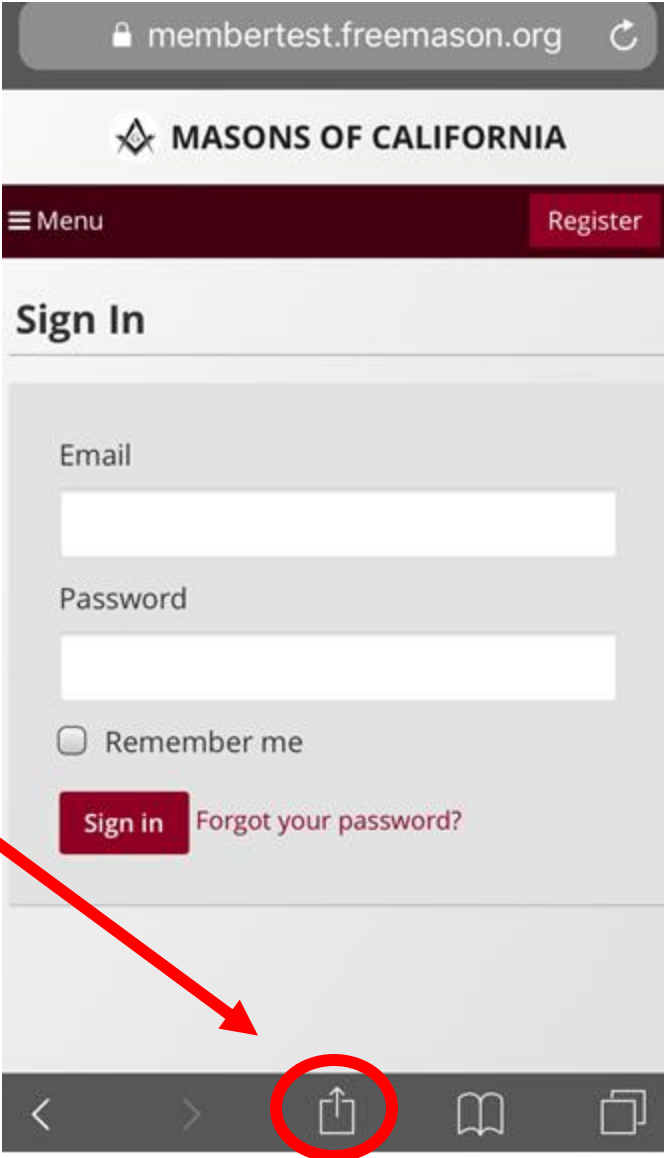
iMember 2.0 App Instructions for iPhone:

https://membertest.freemason.org/public_members

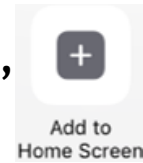


The screenshot shows a mobile browser interface. At the top, the address bar displays 'membertest.freemason.org' with a lock icon and a refresh icon. Below the address bar is a header with the Masons of California logo and the text 'MASONS OF CALIFORNIA'. A dark blue horizontal bar is positioned below the header. The main content area has a title 'Installing the App' in bold black text. Below the title, there is a paragraph of text: 'The process of installing is a little different than what you're used to. Please follow the instructions below.' This is followed by a sub-section header 'iOS device using Safari Browser' in bold black text. The text continues: 'From this page, Click on the share icon  at the bottom of the browser (Note: you may need to hide stored logins and keyboards to display this option). From there you choose the "Add to Home Screen" option. Then choose "add".' The final paragraph reads: 'Now close the browser and look for the app on your home screen keeping in mind that it may be on the last page if you have several pages of apps installed. Upon opening you will log in with the username and password you have set up for your member portal.' At the bottom of the screen, there is a dark grey navigation bar with four icons: a left arrow, a right arrow, a share icon, and a book icon.

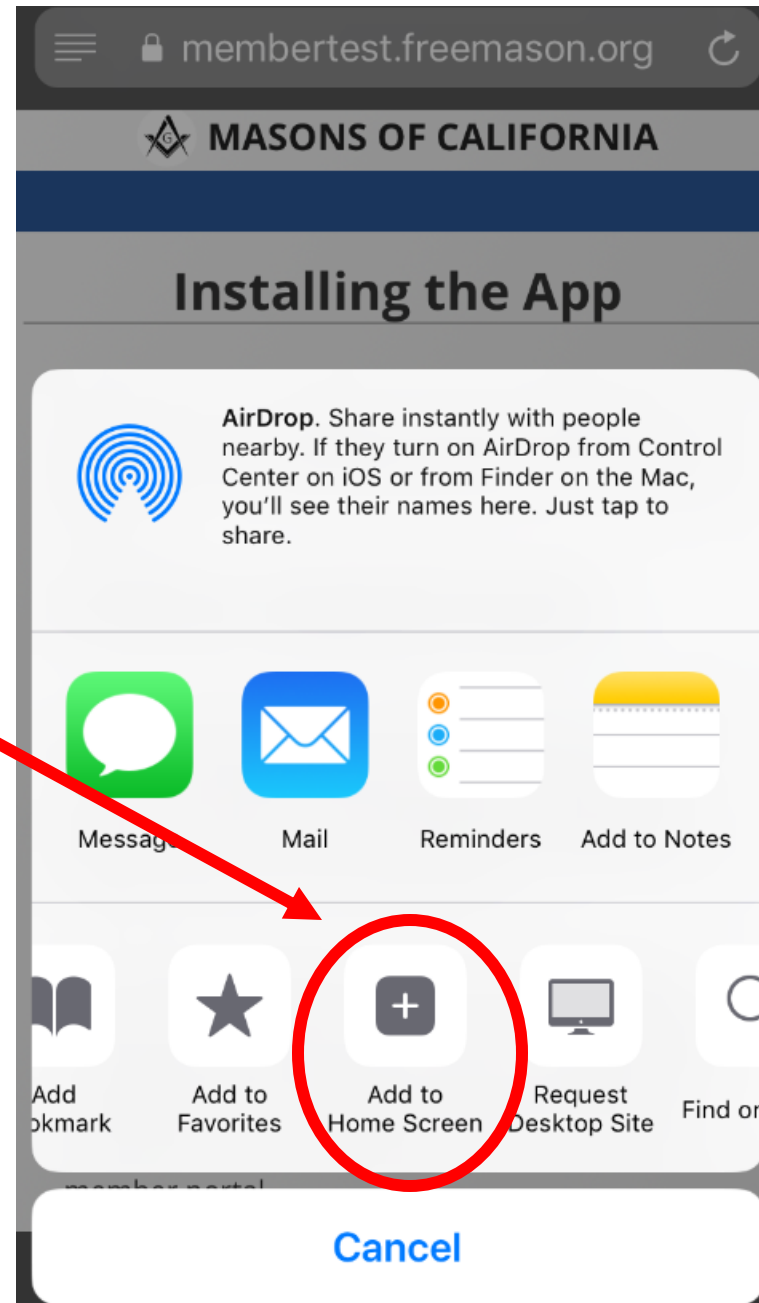
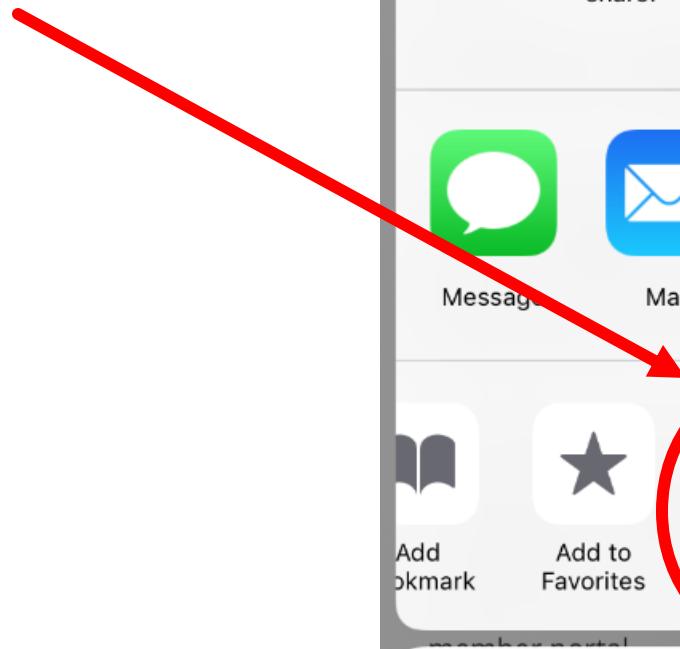
Click on  icon at the bottom of the browser.

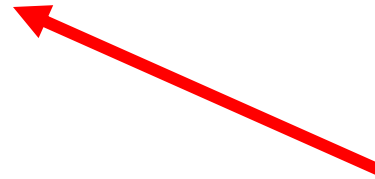
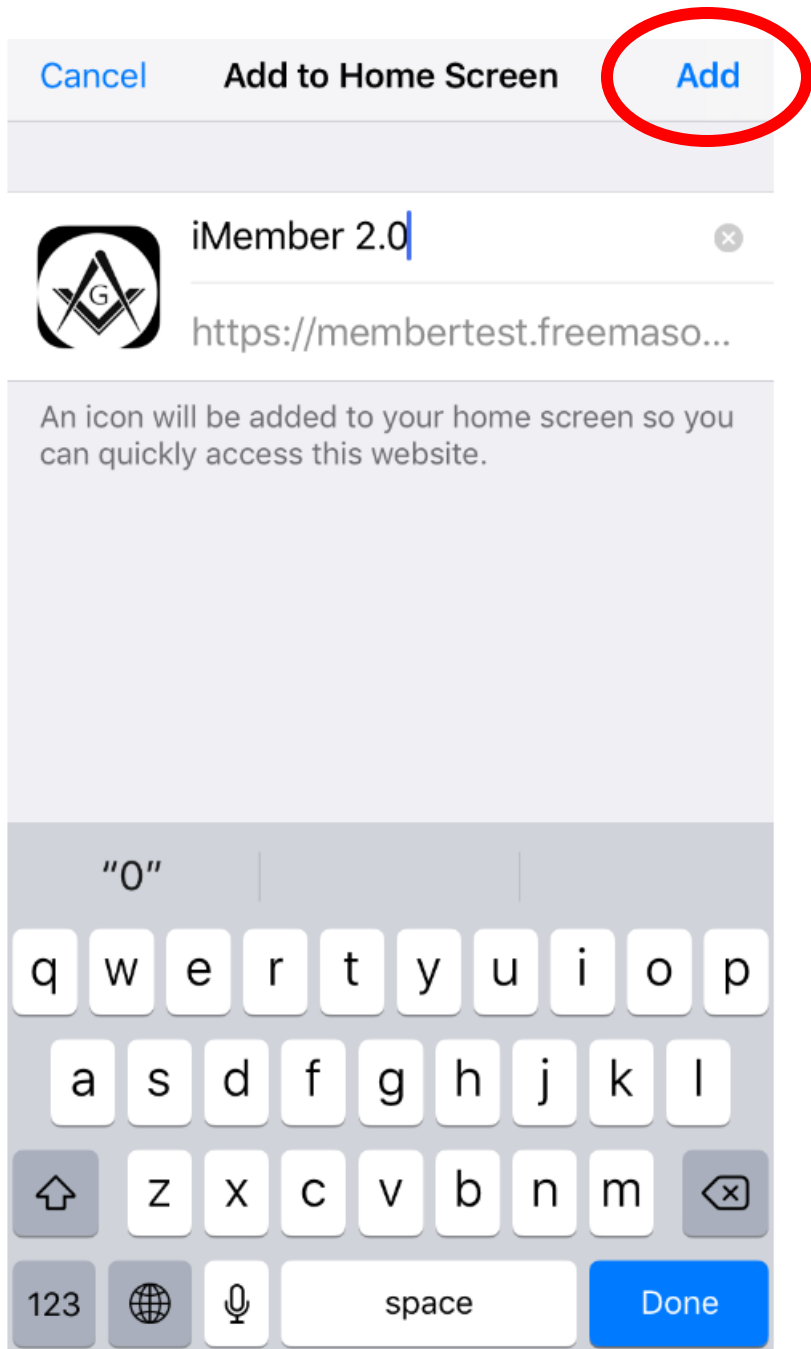


Click on “Add to Home Screen”



icon.



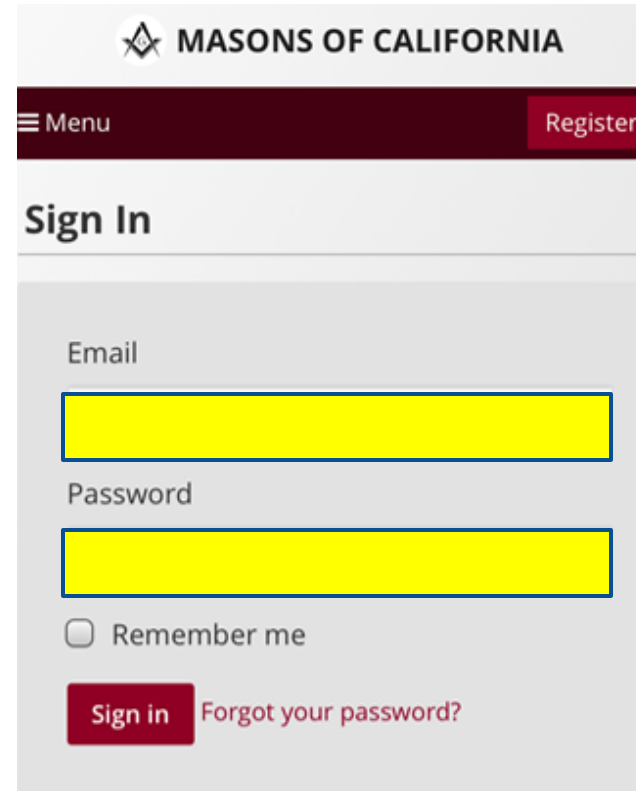


Click "Add" to save on home screen.



Close the browser and look for iMember 2.0 on your phone.(Image may appear different as pictured above)

Upon opening the App, you will login with your registered “Email” address and “Password” that you have set up for your member portal.



The screenshot shows the mobile app interface for MASON'S OF CALIFORNIA. At the top, there is a header with the organization's logo and name. Below this is a dark red navigation bar containing a 'Menu' icon and a 'Register' button. The main content area is titled 'Sign In' and features two input fields for 'Email' and 'Password', both highlighted in yellow. Below the password field is a 'Remember me' checkbox. At the bottom, there is a 'Sign in' button and a link for 'Forgot your password?'.

MASON'S OF CALIFORNIA

Menu Register

Sign In

Email

Password

Remember me

Sign in [Forgot your password?](#)